

# KILNDOWN VILLAGE NEWSLETTER



MAY  
2020



## FROM THE EDITOR

Things have certainly changed since the last Newsletter. With all of our organisations having to put meetings on hold the array of posters usually adorning this Newsletter have not arrived. We are unable to deliver paper copies of the Newsletter as our wonderful delivery team organised so admirably by Hilary are unable to come to your homes.

I am still uncertain where online this Newsletter will appear as I have not had confirmation that it can go on the Kilndown Village Hall website or the Goudhurst Parish Council website.

The Parish Magazine is now available on the [gkchurch.org](http://gkchurch.org) website.

If organisations have any better news for the next edition at the end of October please could they get this to me ([dentondavidthomas@gmail.com](mailto:dentondavidthomas@gmail.com)) by 23rd October.

Meanwhile please take care to look after yourselves and stay safe.

*David Denton*



## COVER PICTURE

The cover photograph was sent in by Lynette Edwards. Please see the item on page 14. The photos opposite are all from Lynette showing that in spite of lockdown there are still some wonderful things you can see and do in your own garden. I often find the badger below waiting just outside the back door wondering why supper is so late. When I open the door she runs off to the other side of the apple tree and watches me put down some food.

*David Denton*





## QUARRY CENTRE

Looking back at the February edition of the Newsletter, we had so many 'things' to look forward to which involved the QC and then it all changed.....

To say the past weeks at the Saturday and now Wednesday Shop have been hectic is putting it mildly. The shopping system had to change, the layout had to change, etc etc. Having encouraged the placement of orders helped, with most customers coming along, collecting their boxes, and going or having them delivered by our team of helpers but does mean more time spent in the Centre collating. Having changed our opening times to 10am – 12 noon, to accommodate the finishing of orders ( adding dairy goods etc) has lengthened the Shop day, as we are operating a 'one in one out' system, sometime customers are still being served well after noon. But, that's how it for the time being. At the end of May we will review the Wednesday opening, as it was very apparent as soon as 'lockdown' was eased a little, trade dropped off somewhat.

Just like any other shop, we've had problems in sourcing certain goods, especially flour and yeast, word spreads rapidly when we do get some of whatever is highly sought after, on our shelves! Talking of sourcing goods, we do have now, on the shelves more non organic odds and ends then we usually keep and quite a few more 'loose' items, just because they were available and we try not 'to do' empty shelves. We've heard many stories on what is happening in the 'trade', but this is probably not the place to relate them! And on reading articles on how the workers in the fruit growing regions of the world, are faring, let alone this country, is somewhat worrying –as in a morning ( at present) we can sell 18kg of bananas, we may well have to brush up on the ditty, "Yes, We've got no Bananas " and I don't mean, because I've forgotten to order them.

It seems that we are eligible to apply for one of the government grants on 'offer', as we have lost business, which is true, as in, bookings from the Garden Club, Community Choir, Bedgebury Foundation, Pop up Pub, the Tea Room to mention a few.

Plans are still ongoing for the Nostalgia Day – whenever that may be now. We applied for a Grant from National Lottery 25 to fund the event and were pleased to receive £500. ( I must not lose the debit card on which this money is). This may seem a lot of money, however, in my head there are a few ideas with what to do with any excess – this may include that unsightly salt box by the telephone kiosk!

*Lynda*

And from the Chairman,

I would like to say a BIG thank you to Lynda, Christine and John for running the Shop, Grainne, Huthrie and Sarah/Richard the 'delivery team', to Ann & Alan for services rendered, to anyone who has been appropriated to take 'something that has been forgotten' somewhere, to Clive for dealing with a few financial bits, and most of all to YOU the customers.

*Richard*



### **GARDENING CLUB**

We held our first meeting of the year, on Thursday March 5, when Dr John Feltwell gave an illustrated talk on Butterflies in Britain to 15 intrepid members who fought their way through some dire weather to be at the meeting.

Needless to say, everything planned for the next few months has been cancelled.

However, we have a few donations of plants and are promised more, and these have been sold/will be sold outside the Quarry Centre when the Shop is open. A few orders for the geraniums we usually sell at our Plant Sale, have been placed and I'm hoping the nursery that supplies us is able to do so. We have had a donation of a few gardening tools and other odds and ends, which are being stored for when we can have a Sale.

It has been suggested that Members could take 'photos of their garden, best bloom, prettiest patio pot and the like and we could have a competition or something or other later in the year .....

In the meantime - Keep on Gardening!

*Lynda*

## BETTY'S TRACTOR RUN

This vintage and veteran tractor run was planned for Sunday May 31, to raise money for Hospice in the Weald. This like, so many other events has been postponed.

More news as to another date, as and when circumstances allow.



## Starting University or changing school this Autumn? GOUDHURST EDUCATIONAL FOUNDATION

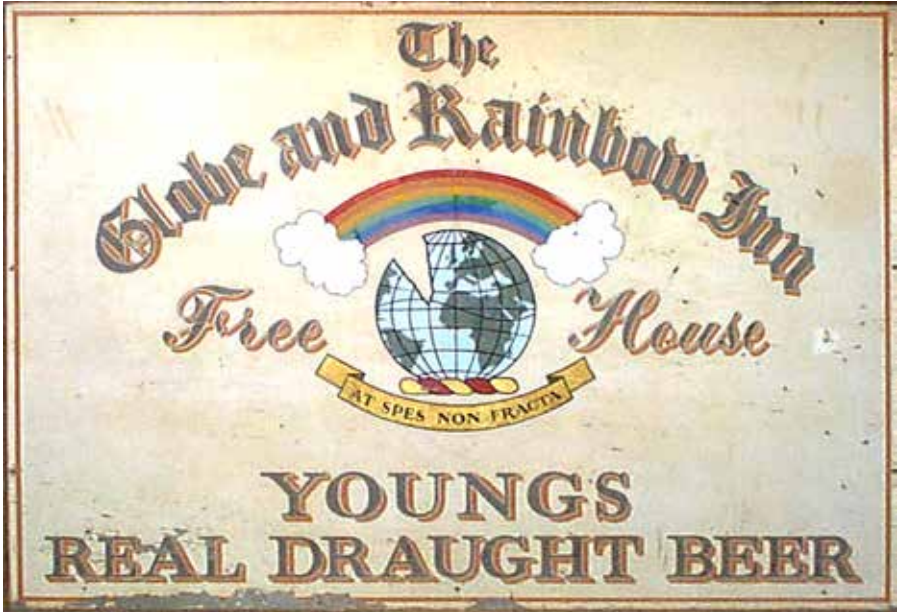
The Trustees of the Foundation are inviting applications for a limited number of grants to residents in the Parish of Goudhurst (Goudhurst, Kilndown, Curtisden Green) who are under 25 and who, in the opinion of the Trustees, are eligible for financial assistance towards their education. Grants can be towards the cost of education, or for outfits, clothing, tools, instruments or books to help beneficiaries at school, university or any other educational establishment.

To apply, please contact Richard Bushrod, Clerk to the Trustees, 01580 211875 (answerphone) or [r.bushrod@btinternet.com](mailto:r.bushrod@btinternet.com) forms to be back before 15th July 2020.



*Tunbridge Wells General Hospital (see Village Echo on page 8)*

## HOPE



At a time when we are using the rainbow symbol as a thank you to our wonderful NHS workers I thought it appropriate to look again at the old pub sign for the Globe & Rainbow.

The name is based on the coat of arms of the Hope family, Alexander James Beresford Beresford-Hope, the stepson of Lord Beresford, extended the old White Hart pub in Kilndown in 1870 with the large Victorian section. This was to supply a function room and hotel accommodation. He took the new name from his family's coat of arms. The motto comes from one of the Greek odes and loosely translated that section's meaning is 'although the world falls into ruins the hope of a just man cannot be broken'. In these difficult times that motto seems just what we all need.

So thank you NHS workers, care workers, The Quarry Centre, the postman, the dustmen (or whatever they now call themselves), shops and supermarkets, white van men, good neighbours, our churches, and everyone that is supporting and helping us all through these troubling times.

When this is all over I hope we all continue to show our appreciation for all these people that we have so often taken for granted.

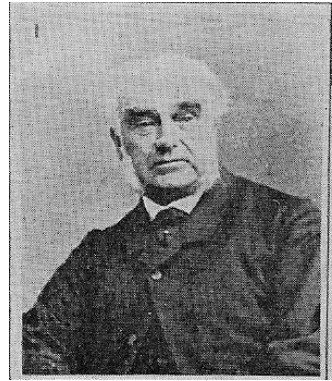
*David Denton*  
Editor

*(My thanks also goes to Cellar Head Brewery in Kilndown and their delivery service)*

## IN SICKNESS AND IN HEALTH

With the National Health Service very much on our mind in recent weeks it is interesting to see the myriad ways that our Villages coped with illness in the days before free medical assistance.

There was always at least one doctor resident in the parish and usually two. One of the earliest was Dr Samuel W Newington who lived at Tattlebury for 40 years until his death in 1868. As well as being the parish doctor, he established a mental Asylum. He was from a family of medics originating in Ticehurst with Samuel Newington senior, who died in 1811, who also made a particular study of treatment of the 'insane'. A series of doctors followed Newington including a father and son called Collingridge during the early 1900s who continued into the war years.



*Dr S W Newington*

During World War One an Auxiliary Military Hospital was set up at Gore Court in two of the cottages. It treated 327 patients between 1915 and 1919. A Miss Harris was Sister-in-Charge.

A surgery continued to be held at Tattlebury, although not a very convenient location. In 1922 a joint practice of Doctors Marshall and Harvey was based at the Manor House on the High Street until 1930 when it too moved to Tattlebury. In 1976 the surgery moved to West House, West Road, next to what is now Viva, the hairdressers. One of the doctors came down to Kilndown to hold a regular surgery. The consulting room was in the old Kilndown Stores and Post Office. Patients wanting to see the doctor had to wait outside in an old shack with a corrugated roof that was obviously freezing in the winter. West House surgery eventually outgrew its situation making it necessary to move to the present Old Parsonage site. In the continuing tradition of raising funds for medical care, the incumbent Doctors Hugo and Llewellyn personally raised a loan to buy the land. The existing house was then converted.

It was essential to belong to an insurance scheme to be called upon in times of illness. Long before the welfare system was established the Goudhurst Benefit Society was set up in June 1838. It ensured that anybody contributing to the scheme would be able to call upon a 'medical man' for consultation and medicine. Any bottles issued with medicine had to be returned to the doctor 'clean and sound' or a payment of 6d was demanded.

Specifically for children, Goudhurst Infant Welfare Centre was founded in 1928. A room in the Ex-Service Men's Club (now Goudhurst Club) was loaned for use twice





Photo: Verrall Goudhurst

a month. There was no charge, only 1d for tea. The picture below, from 1935, shows a rather crowded scene of mothers and babies, nurses in uniform and presumably the only man centre stage, a doctor. The movement originated in Britain in the 19<sup>th</sup> century as a voluntary initiative when maternal mortality rose even as infant mortality fell.

Before the National Health Service came into being, organisers of local nursing associations were responsible for employing district nurses and paying their salaries, building homes for them to live in and other expenses. All these associations undertook fundraising to meet their outgoings. One such branch was the Goudhurst District Nursing Association started in 1911, affiliated to the Kent County group. Like all such groups it relied on subscribers, outside help or jumble sales to raise funds. District nurses were required to carry out many duties from inspecting children for nits, to visiting the sick and delivering babies.

One well-remembered lady was Nurse Stack who retired in 1945 after eighteen years of service. She was also fully involved in village life such as being President of Goudhurst Ladies division of the British Legion. She was also a founding member of Brandfold Tennis Club, which originated indoors in the village hall in 1946. She died in 1977 aged 95. Finally, another fund raising group was Goudhurst Hospital Committee that was founded in 1921. This was in aid of Tunbridge Wells General Hospital, as it was called in 1935. It shows that not everything changes as we are still raising money for healthcare and the NHS despite vast improvements to our welfare system.

*Local History Society*

Email: [help@goudhurstlocalhistorysociety.org](mailto:help@goudhurstlocalhistorysociety.org)

Website: [www.goudhurstlocalhistorysociety.org](http://www.goudhurstlocalhistorysociety.org)

Tel: 01580 212457



## GOUDHURST PARISH COUNCIL MEETINGS

Dates for forthcoming Parish Council meetings are:

Parish Council Meeting	Monday 08 June	7.30 pm	by Zoom
Planning Committee	Tuesday 09 June	6.30 pm	by Zoom
Traffic and Parking Committee	Monday 15 June	6.30 pm	by Zoom
Business & Communications Cttee	Monday 15 June	7.30 pm	by Zoom
Planning Committee	Tuesday 23 June	6.30 pm	by Zoom
Highways Committee	Tuesday 23 June	7.30 pm	by Zoom
Parish Council Meeting	Monday 13 July	7.30 pm	by Zoom

All are welcome to attend these meetings at which time is set aside for questions from the public.

*Anthony Farnfield*

Clerk 01580 212552

[clerk@goudhurst-pc.gov.uk](mailto:clerk@goudhurst-pc.gov.uk) <https://goudhurst-pc.gov.uk>

Despite Lockdown, your Parish Council is still working almost normally. But instead of meeting in person, we 'meet' by the telephone conference system 'Zoom'. Local residents are welcome to join a Parish Council Zoom meeting to ask a question or make a statement for no longer than 3 minutes.

Please call Anthony Farnfield, the Clerk for more details.

Goudhurst Parish Council,  
The Hop Bine, Risebridge Farm,  
Ranters Lane,  
Goudhurst TN17 1HN

Please call first to make an appointment.

Note that visitors to the Parish Council office should enter Risebridge Farm from Peasley Lane.

## PARISH COUNCIL NEWS

We are grateful to all those risking their lives to keep our NHS going, and indeed our own Goudhurst Surgery, doctors, nurse and staff there whenever needed at the end of a phone line or a “car park” consultation. Thank you all and to our shops, pharmacy, newsagents, farm shops and their staff who have innovated, and kept going. And to all those who have volunteered to help with those locked down, supplying and manning the food bank and its delivery. How fortunate we are to live in a community where so many have rallied round to help.

The **Parish Council**, and its committees have continued to meet taking advantage of our online communication system and Zoom; a system as suitable for lockdown family parties, quizzes, and even your parish council. Local elections were postponed this May, but your Parish Council held its Annual Meeting “virtually” on May 11th and most committees remain substantially unchanged.

We wish all parishioners the very best over the next few weeks, be it return to work, to school, postponed medical treatment and avoiding the virus and its consequences.

Your Parish Councillors ... David Boniface, Craig Broom, Chris Ditton, Alan Foster, Antony Harris (Chairman), Phil Kirkby, David Knight, Barry Noakes, Caroline Richards, Jayne Russell, Guy Sutton and Peter Wood.

*p.s. Some Parish Councillors continue to have some unreliability with **emails** both incoming and out going following our forced change to our email addresses. If you do not receive responses you might otherwise have expected, do check with Clerk 01580 212552 that messages have got through.*

New e-mail address: [clerk@goudhurst-pc.gov.uk](mailto:clerk@goudhurst-pc.gov.uk)

New website: <https://goudhurst-pc.gov.uk>



*More visitors to  
Quarry House garden*

## Sunday Amenity Lorry Schedule

**Goudhurst - Balcombes Hill Car Park. 08.00 to 11.00**

**31 May** Domestic Waste

**14 June** Domestic Waste

**Kilndown – Beresford Close 12.00 to 13.45**

**Curtisden Green – Outside Bethany School 14.00 to 15.00**

**31 May** Domestic Waste

**28 June** Domestic Waste

**The following items CAN NOT BE ACCEPTED IN THE VEHICLE and must not be put into your Wheelie Bin:**

Waste from outside Tunbridge Wells Borough

Waste from Businesses

Waste transported in a commercial vehicle

Waste on trailers

Car Batteries

Asbestos

Rubble/bricks/plasterboard

Chemicals/Hazardous waste/Paint

Tree trunks and branches more than 3 ins diameter

Garden Waste.

Doors & large pieces of wood

White electrical products

Fridges, Freezers, Computer equipment etc

Televisions, Kettles, Microwaves

Mirrors

Sheet(s) of glass/Toughened glass

Tyres

Soil

Oil of any type

**If you have large items for disposal please phone Tunbridge Wells Borough Council (01892 526121) for advice and to arrange a special collection.**



*Quarry Pond litter bin and bench at the height of this year's flood*

## THE QUARRY POND

In the February issue of the Newsletter I put in an item about the Quarry Pond with a photo of the area flooded to the point that the picnic bench seats were under water. Tony Bovey located the overflow pipe and the pit where the pipes connected. Finally he has managed to clear the blockage and the water is returning to a normal level. If you would like to see him at work there is a video clip on his Facebook page (still from this below).



I was looking through my photo collection of the common spotted orchids which grew here. A few years ago I counted over 140 flowering spikes in late June. This year the area where these were growing has been under water for around five months. The plants should be coming

up by now. The photos show the same view taken in 2007 and this week. At the time of writing the area is still too muddy to walk comfortably across. The grass has gone and it smells of decaying vegetation. I am sure it



will recover, but whether the orchids return is much less certain.

*David Denton*

## OTHER ORCHIDS

On 4th May I was delighted to see that a very healthy looking twayblade was growing in the churchyard by the war memorial. Over the years several different types of orchid had grown here. A few years ago the twayblades disappeared after chemical weedkiller spraying around the base of the memorial. Sadly the next day the churchyard maintenance contractors came in and mowed it.

Since I have been recording the orchids growing here I have seen green veined orchids, common spotted orchids, twayblade and autumn ladies tresses, all growing around the base of the war memorial.



*David Denton*



## WHEN IS THE RIGHT TIME?

For the clock at Christ Church the answer to this question is on Saturday morning of 11th April (Easter Eve).

As you will be aware the money was raised for major repairs to the clock which was returned and regulated to be very slightly fast to enable us to complete the fine regulation. Mark made his first adjustment which slowed it down a little. Then we were instructed by the Church of England that winding/regulating clocks was not considered an essential item under lockdown and should not be carried out. This arrived just before the clocks were put on by an hour. Since then the clock has gradually made up the hour until it was spot on. Now, of course, it is fast again and getting worse by the day. Please bear with us as we await the opportunity to get back to the regulation process.

*David Denton*

## VE DAY

Victory in Europe Day is the day celebrating the formal acceptance by the Allies of World War II of Nazi Germany's unconditional surrender of its armed forces on Tuesday, 8 May 1945, marking the end of World War II in Europe.

Seventy five years on and a different type of world war has spread, affecting us all. The coronavirus too is causing huge numbers of deaths world wide. Instead of a village celebration of the end of a war that is still within living memory of many people lock-down meant that only a few people were able to put out Union Jacks to mark the occasion just as Lynette and David have done (see cover photo).



Twenty five years ago the fiftieth anniversary was celebrated in a traditional Kilndown way with a great party on the Millennium Green. There was so much going on and, of course, lots of food.

These photos that I took bring back many memories, not only of



the celebration but also of some of our great village community friends, sadly no longer with us. And there was a celebration cake.

I hope that in a few years time we will be able to celebrate the end of coronavirus just as we have celebrated the end of war.

*David Denton*

